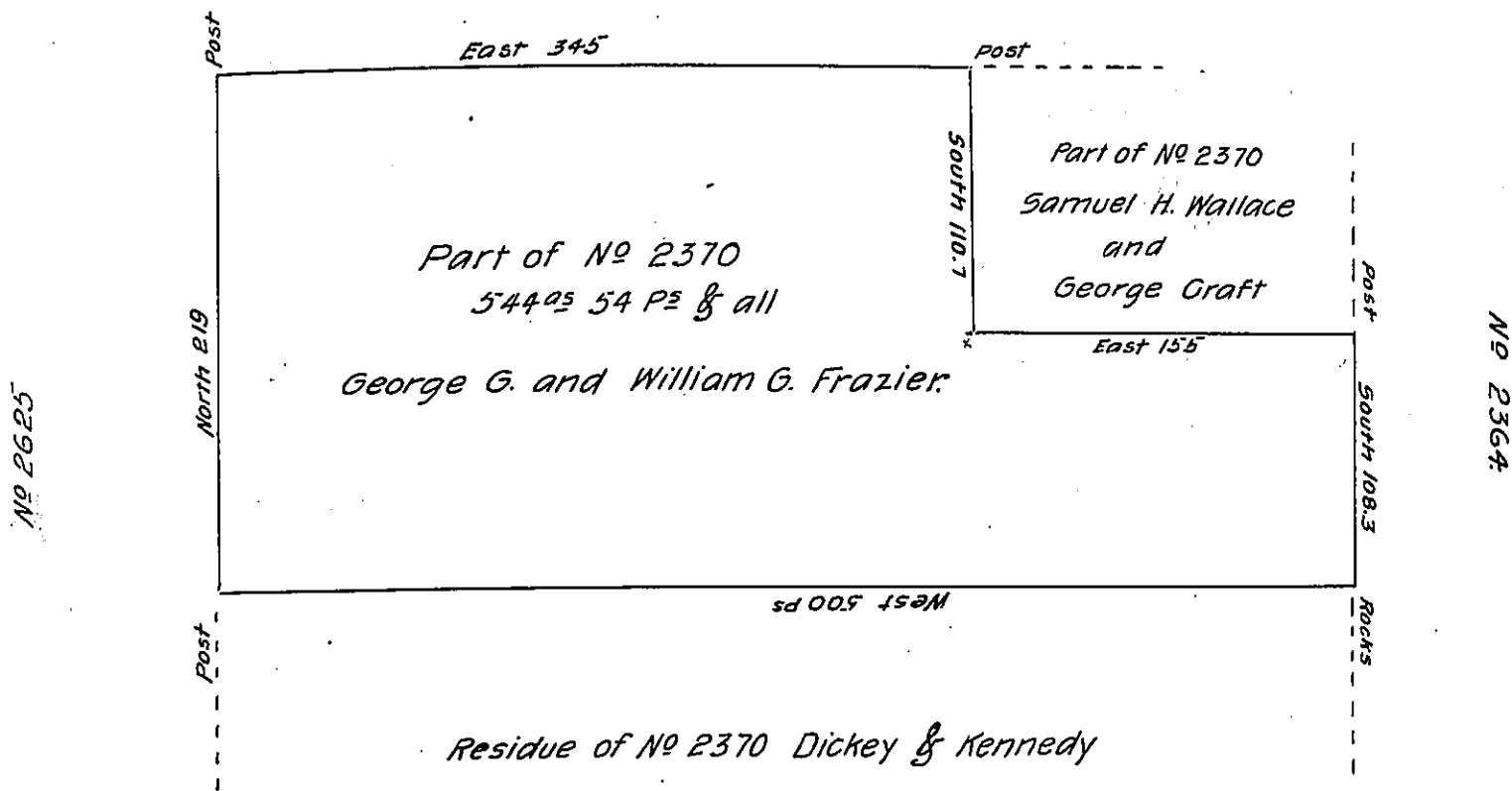


No 2617



A draft of a tract of land situated in the Township of Heath and County of Jefferson containing 544 acres 54 perches and allowance of six per cent. for roads etc. Surveyed for _____ the _____ day of _____ 1 _____ it being part of a larger tract containing 984 $\frac{1}{4}$ acres _____ perches and allowance originally surveyed in pursuance of a Warrant granted to Wilhem Willink & Co. dated the twelfth day of December 1792.

Constructed by

John H. Campbell - Draughtsman
 County Surveyor
 Dep^t Int Affrs

To James W. Latta Esq
 Secretary of Internal Affairs.

IN TESTIMONY that the above is a copy of the original remaining on file in the Department of Internal Affairs of Pennsylvania, made conformably to an Act of Assembly approved the 16th day of February, 1833, I have hereunto set my Hand and caused the Seal of said Department to be affixed at Harrisburg, this twenty seventh day of February 1905.

Isaac R. Brown
 Secretary of Internal Affairs.